

Computing Pathway

Louisiana State University

LSU

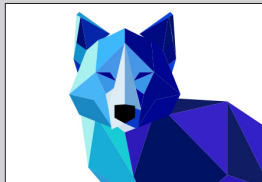
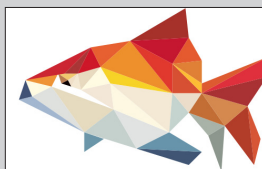
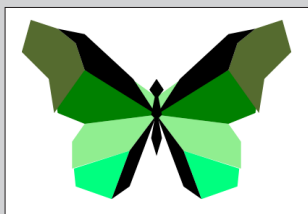
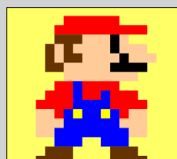
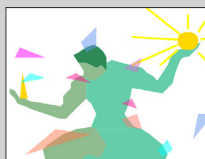
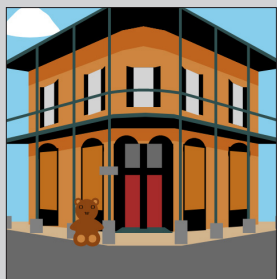
Middle &
High School
Teachers

Why Teach Computing?

Only 23% of Louisiana public schools offer computer science courses, but careers in this field are growing rapidly in Louisiana. Computer science skills are necessary for students to compete in the 21st century job market. The LSU Computing Pathway is designed for TOPS University and TOPS Tech diploma-seeking students. It offers courses for students to earn statewide industry-promulgated credentials, as well as a Silver or Gold STEM Diploma Seal.

Requirements for Teachers

- » Complete a summer training course on the computing pathway course you will teach
- » Teach at least one computing course
- » Attend one community of practice meeting each month during the school year
- » Maintain an open line of communication with LSU Computing Pathway staff



**Qualified teachers
receive \$4,100 per
year for teaching
courses**

**Ability to earn
graduate credit for
course training**

**Expand computer
science education in
Louisiana**

**Bring new
opportunities to
your students**

**Become a STEM
teacher expert and
leader in your school**



brbytes.org