

# MICRO CREDENTIALS

Improving STEM Pathways in Louisiana Through Micro-Credentials

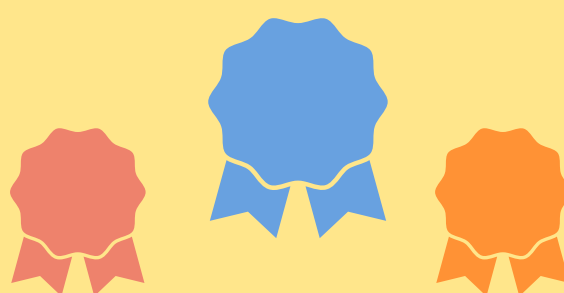
U.S. DEPARTMENT OF EDUCATION'S EDUCATION INNOVATION AND RESEARCH PROGRAM

8

**MICRO-CREDENTIALS**

(PER PATHWAY)

Provide job-embedded professional development that will improve teacher instruction and student learning



**STUDENTS**

**+1,500**



Students who will be taught by teachers who receive the micro-credentials

**100+**

**TEACHERS**



Current LSU or PLTW pre-engineering or digital design teachers can participate for a 2 year study period

**COMPENSATION**

Up to  
**\$1,500**



Amounts teachers can earn for participation in the study

**PARTNERS: LDOE, LSU, BLOOMBOARD AND RAND CORPORATION**

Learn more: <https://www.rand.org/education-and-labor/projects/STEM-micro-credentials.html>

Questions: email Karen at [kchristi@rand.org](mailto:kchristi@rand.org)